

AGENDA

Meeting: Pewsey Area Board
Place: Coronation Hall, East Grafton, Village Green
Date: Monday 20 May 2019
Time: 7.00 pm

The Area Board welcomes and invites contributions from members of the public. The chairman will try to ensure that everyone who wishes to speak will have the opportunity to do so.

If you have any requirements that would make your attendance at the meeting easier, please contact your Democratic Services Officer.

Refreshments and networking opportunity from 6:30pm.

Please direct any enquiries on this Agenda to Craig Player Democratic Services Officer, direct line 01225 713191 or email craig.player@wiltshire.gov.uk

All the papers connected with this meeting are available on the Council's website at www.wiltshire.gov.uk

Press enquiries to Communications on direct lines (01225) 713114 / 713115.

Wiltshire Councillors

Cllr Jerry Kunkler, Pewsey
Cllr Paul Oatway QPM, Pewsey Vale
Cllr Stuart Wheeler, Burbage and The Bedwyns

RECORDING AND BROADCASTING NOTIFICATION

Wiltshire Council may record this meeting for live and/or subsequent broadcast on the Council's website at <http://www.wiltshire.public-i.tv>. At the start of the meeting, the Chairman will confirm if all or part of the meeting is being recorded. The images and sound recordings may also be used for training purposes within the Council.

By entering the meeting room you are consenting to being recorded and to the use of those images and recordings for broadcasting and/or training purposes.

The meeting may also be recorded by the press or members of the public.

Any person or organisation choosing to film, record or broadcast any meeting of the Council, its Cabinet or committees is responsible for any claims or other liability resulting from them so doing and by choosing to film, record or broadcast proceedings they accept that they are required to indemnify the Council, its members and officers in relation to any such claims or liabilities.

Details of the Council's Guidance on the Recording and Webcasting of Meetings is available on request.

Parking

To find car parks by area follow [this link](#). The three Wiltshire Council Hubs where most meetings will be held are as follows:

County Hall, Trowbridge
Bourne Hill, Salisbury
Monkton Park, Chippenham

County Hall and Monkton Park have some limited visitor parking. Please note for meetings at County Hall you will need to log your car's registration details upon your arrival in reception using the tablet provided. If you may be attending a meeting for more than 2 hours, please provide your registration details to the Democratic Services Officer, who will arrange for your stay to be extended.

Public Participation

Please see the agenda list on following pages for details of deadlines for submission of questions and statements for this meeting.

For extended details on meeting procedure, submission and scope of questions and other matters, please consult [Part 4 of the council's constitution](#).

The full constitution can be found at [this link](#).

For assistance on these and other matters please contact the officer named above for details

	Time
<p>1 Welcome and Introductions</p> <p>The Chairman will welcome those present at the meeting.</p>	7.00 pm
<p>2 Apologies for Absence</p> <p>To receive any apologies or substitutions for the meeting.</p>	
<p>3 Minutes (<i>Pages 5 - 10</i>)</p> <p>To confirm the minutes of the meeting held on 11th March 2019.</p>	
<p>4 Declarations of Interest</p> <p>To receive any declarations of disclosable interests or dispensations granted by the Standards Committee.</p>	
<p>5 Chairman's Announcements (<i>Pages 11 - 18</i>)</p> <p>The Chairman will make the following announcements:</p> <ul style="list-style-type: none"> • Community Led Housing Project • Homelessness Strategy Consultation • The Maltings and Central Car Park Masterplan Consultation • North Wessex Downs Walking Festival • Pewsey Housing Needs Survey 	7.10 pm
<p>6 Partner Updates Part 1 (<i>Pages 19 - 26</i>)</p> <p>To receive any updates from partner organisations:</p> <ul style="list-style-type: none"> • Wiltshire Police • Dorset and Wiltshire Fire and Rescue 	7.20 pm
<p>7 Community Engagement Manager Update</p> <p>To receive a video update on Wiltshire's Big Pledge Challenge 2019 on how to get involved, hints and tips to support your pledge and how to keep on track.</p>	7.30 pm
<p>8 Update on the Working Groups and Projects</p> <p>a) Local Youth Network - Cllr Jerry Kunkler</p> <p>b) Health and Wellbeing -Cllr Stuart Wheeler</p> <p>c) Community Area Transport Group - Cllr Jerry Kunkler</p>	7.35 pm

9	<p>Milton Lilbourne Church</p> <p>To receive an update on the Church Bells Project, which has previously been granted funding by Pewsey Area Board.</p>	7.55 pm
10	<p>Community Area Grants (<i>Pages 27 - 30</i>)</p> <p>To consider four applications for Community Area Grants, as follows:</p> <ul style="list-style-type: none"> • Wootton Rivers Village Hall Refurbishment of toilet/cloakroom facility at village hall - £2072.12 • Ham Village Hall Doors and windows - £2000 • Burbage and Easton Royal Cricket Club Burbage ER Cricket Club outfield levelling - £5000 • Upavon Village Hall Update and replace fire alarms and lighting - £977.40 	8.10 pm
11	<p>Partner Updates Part 2 (<i>Pages 31 - 36</i>)</p> <p>To receive updates from partner organisations:</p> <ul style="list-style-type: none"> • Spotlight on Parishes • Pewsey Community Area Partnership • HealthWatch • NHS Wiltshire Clinical Commissioning Group 	8.20 pm
12	<p>Urgent items</p> <p>Any other items of business which the Chairman agrees to consider as a matter of urgency.</p>	
13	<p>Future Meeting Dates and Close</p> <p>The next meeting of the Pewsey Area Board is scheduled for 8th July 2019, 7pm at The Vale Community Campus, Wilcot Road, Pewsey, SN9 5EW.</p>	8.30 pm

MINUTES

Meeting: PEWSEY AREA BOARD
Place: Burbage Village Hall, 58-60 Eastcourt Road, Burbage SN8 3AJ
Date: 11 March 2019
Start Time: 7.00 pm
Finish Time: 8.55 pm

Please direct any enquiries on these minutes to:

Kev Fielding - Democratic Services Officer, Tel: 01249 706612 or (e-mail)
kevin.fielding@wiltshire.gov.uk

Papers available on the Council's website at www.wiltshire.gov.uk

In Attendance:

Wiltshire Councillors

Cllr Jerry Kunkler, Cllr Paul Oatway QPM and Cllr Stuart Wheeler

Wiltshire Council Officers

Richard Rogers – Community Engagement Manager
Kev Fielding – Democratic Services Officer

Parish Councils

Burbage Parish Council – Glenda Pearce, Jill Terry & Steve Colling
Charlton & Wilsford Parish Council – Bob Montgomery
Great Bedwyn Parish Council – Jenny Clack
Pewsey Parish Council – Alex Carder, Terry Eyles, Peter Deck & Curly Haskell
Rushall Parish Council – Colin Gale
Shalbourne Parish Council – Mike Lockhart
Woodborough Parish Council – John Brewin

Partners

Wiltshire Police – Pete Foster
Dorset & Wiltshire Fire and Rescue Service – David Adamson
Pewsey Community Area Partnership (PCAP) – Dawn Wilson, Colin Gale, Susie Brew

Total in attendance: 45

14	<p><u>Welcome and Introductions</u></p> <p>The Chairman welcomed everyone to the meeting of the Pewsey Area Board, and to Burbage Village Hall.</p> <p>The Chairman introduced the councillors and officers present.</p>
15	<p><u>Apologies for Absence</u></p> <p>Apologies for absence had been received from Margaret Holden – Easton Royal Parish Council.</p>
16	<p><u>Minutes</u></p> <p>Decision</p> <ul style="list-style-type: none"> • The minutes of the meeting held on Monday 21 January 2019 were agreed as a correct record and signed by the Chairman.
17	<p><u>Declarations of Interest</u></p> <p>There were no declarations of interest.</p>
18	<p><u>Chairman's Announcements</u></p> <p>The following Chairman's Announcements contained in the agenda pack were noted:</p> <ul style="list-style-type: none"> • Electoral Review. • The Vale Community Campus Official Opening Event – Friday 22 February 2019.
19	<p><u>Partner Updates Part. 1</u></p> <p>The written Wiltshire Police update contained in the agenda pack was noted.</p> <p>The written Dorset & Wiltshire Fire and Rescue update was noted.</p>
20	<p><u>Children's Centre Services Consultation</u></p> <p>Lucy-Anne Bryant – Lead Commissioner, Wiltshire Council gave a short presentation that outlined a consultation to ask for people's views on proposals to expand Wiltshire Council's successful model of providing children's centre</p>

services in local community venues.

Points made included:

- Children's centre services in Wiltshire were provided by two charities, Spurgeons and The RISE Trust. Children's centres work with families and children to enable them to have a good start in life, offering support and activities which enable them to become strong families and support them through times of stress and difficulty.
- In 2016, Wiltshire Council changed the way that children's centre services were offered in Wiltshire to focus on people who needed the most help. This approach had been very successful.
- Wiltshire Council would continue to expand on this successful service redesign and, as it needed to make further service savings in 2019-20, it would invest in staff rather than buildings.
- It was proposed that the council used more community venues such as community halls, libraries, campuses and leisure centres.
- Wiltshire Council aimed to ensure that those who were the most vulnerable received the most support at the earliest possible time (Early Support).
- Developing a community based approach would enable children's centre services to continue to work in greater collaboration with health visiting and midwifery as well as with colleagues who support housing and employment, this would be a real opportunity to invest in multi-agency partnerships.
- Children's centre services would also be placed more firmly alongside the work of pre-schools, nurseries and childminders. Services in the early years would work more closely together to support the family without duplicating support.
- As part of the consultation Wiltshire Council were talking to local childcare business/providers, libraries, churches, leisure centres, parish councils and trustees of community halls to firm up options for days and times when Children's centre activities could take place close to people's homes, schools, nurseries and other local facilities. Childcare providers particularly want to use some of the buildings formerly used by children's centres to increase childcare in the area.

Concerns were raised that there appeared to be move coverage in the North West of the county.

That it was pleasing to hear that Puddleducks Nursery And Pre-School would be

	<p>taking on the Pewsey Childrens Centre building at Wilcot Road.</p> <p>The Chairman thanked Lucy-Anne Bryant for her presentation.</p>
21	<p><u>Update on Working Groups and Projects</u></p> <p>Local Youth Network – including proposals for expenditure - Cllr Jerry Kunkler</p> <ul style="list-style-type: none"> • That the LYN would be sorting out a meeting with Richard Rogers in the near future. <p>Health and Wellbeing – including proposals for expenditure - Cllr Stuart Wheeler</p> <ul style="list-style-type: none"> • That the minutes of the Pewsey Vale Health & Wellbeing Forum meeting held on 17 January were noted. • That the group had last met on Thursday 7 March. • Dawn Wilson – PCAP was thanked for her hard work pulling the funding together for the Raizer Chairs. • That the Canal trip would now be taking place on Monday 17 June. • Asset Mapping – Parish Council feedback was required if the exercise was to be a success. <p>Community Area Transport Group – including proposals for expenditure - Cllr Jerry Kunkler</p> <ul style="list-style-type: none"> • That the notes of the meeting held on Wednesday 12 December 2018 were agreed. • That two bids for Substantive Funding had been approved by the Cabinet Member.
22	<p><u>Highways Schemes 2019-20</u></p> <p>Peter Binley – Highways Asset Management & Comm, Wiltshire Council gave a short presentation that outlined the Wiltshire Highways planned maintenance for the Pewsey community area during 2019 – 2023.</p> <p>The highway network formed the Council’s largest asset, and it was important that it was maintained in the most cost-effective way that provided value for money. This included the use of asset management and whole life costing</p>

	<p>approaches to inform long-term investment decisions.</p> <p>Decision</p> <ul style="list-style-type: none"> • That the Pewsey Area Board welcomed the road surfacing work and repairs carried out in 2018/19 and noted the improvement in the overall condition of Wiltshire’s roads in recent years, but acknowledged that further investment was still required. • Approved the highway maintenance scheme list for 2019/20 prepared for the Area Board. • Noted the new provisional five year programme, which would be reviewed annually to ensure best value for money and whole life costing for the highways asset. <p>The Chairman thanked Peter Binley for his presentation.</p>
23	<p><u>Community Engagement Manager Update - Richard Rogers</u></p> <p>Richard Rogers was introduced as the new Pewsey Community Engagement Manager. Richard advised that he was looking forward to getting out and about and meeting people throughout the Pewsey community area.</p> <p>The Chairman welcomed Richard Rogers to Pewsey.</p>
24	<p><u>Raizer Chair Project</u></p> <p>A demonstration of a “Raiser Chair” was given by local Community First Responders.</p> <p>The Chairman thanked Pewsey Community Area Partnership and all those who had contributed to the funding of these useful items that would now be used throughout the community area.</p>
25	<p><u>Pewsey Area Board End of Year Review</u></p> <p>Cllr Jerry Kunkler introduced the Pewsey end of year video review of activities and spend during 2018/19.</p>
26	<p><u>Community Area Grants</u></p> <p>There were no grant funding applications.</p>

27	<p><u>Partner Updates Part. 2</u></p> <p>Updates were received from the following partner organisations:</p> <ul style="list-style-type: none"> • NHS Wiltshire – the written report was noted • Healthwatch Wiltshire – the written report was noted • Pewsey Community Area Partnership – next meeting on Thursday 18 April at Hilcott village hall, with the Wiltshire Bobby Van in attendance.
28	<p><u>Urgent items</u></p> <p>There were no urgent Items.</p>
29	<p><u>Future Meeting Dates and Close</u></p> <p>The next meeting of the Pewsey Area Board is scheduled for Monday 20 May 2019, 7pm at Coronation Hall, East Grafton, Village Green.</p> <p>The Chairman thanked everyone for attending.</p>

Chairman's Announcements

Subject:	Community Led Housing Project in Wiltshire
Web contact:	communityledhousing@wiltshire.gov.uk http://www.wiltshire.gov.uk/housing-community-fund

What is Community Led Housing?

Community led housing is about local people playing a leading and lasting role in solving local housing problems, creating genuinely affordable homes and strong communities in ways that are difficult to achieve through mainstream housing.

Community led housing can empower local communities, making them more resilient and able to address issues such as affordable housing and the need for downsizer accommodation.

What is the Wiltshire Community Led Housing Project?

Wiltshire Council, in partnership with Community First and Wiltshire Community Land Trust, has set up a partnership project to advise and support communities to address their housing needs.

The project vision is to enable and support community groups to deliver housing development that provides defined community benefits which are protected in perpetuity; and to provide a legacy for community led development. Localism and innovation lies at the heart of this and it will help to build stronger and more resilient communities. Community led housing can be complimentary of the on-going Neighbourhood Planning work of the council and its communities.

Community led housing needs to have meaningful community engagement and has to have widespread community support. This means the community needs to have a common vision and shared values; they need to be empowered. This project supports and enables groups seeking to deliver alternative solutions to their community needs beyond the mainstream delivery mechanisms. It can also support community groups working in a developer-community partnership.

The project team has been established with two project managers, a senior planning officer and a housing enabler. It is a cross service project. Grant funding is currently available to groups to help with start-up subject to qualifying terms and conditions.

What has happened so far and what will be happening?

The project is currently supporting seven community groups across Wiltshire including the formally incorporated Seend Community Land Trust. This group have been supported in their establishment, and land identification and negotiation work. Going forward, further support will be given through the planning, building and living stages of their projects as appropriate. They started as individuals, formed a steering group and became a legally recognized community led housing group formulating their own development proposals to serve their community needs.

The team are keen to build as wide a network of community led housing groups as possible throughout Wiltshire. We want to speak to anyone who is interested in trying to take a leading role in addressing community housing issues.

Chairman's Announcements

For further information, or to arrange a conversation with one of the project managers please contact the project team at: communityledhousing@wiltshire.gov.uk.

Subject:	Homelessness Strategy Consultation
Web contact:	Weblink to consultation

A consultation has been launched on how we can prevent homelessness and help those who are homeless to find a home.

Wiltshire Council is asking for views on its new strategy which sets out priorities and actions to work with those who are homeless or threatened with homelessness, to help them secure and keep a good home.

Ashley O'Neill, Portfolio Holder for Housing, said: "We are making real progress in tackling homelessness in Wiltshire, but we can never be complacent – we always need to do more"

"We need to think creatively, deliver a wide range of services and have effective, strong, partnership working to prevent homelessness, and provide the homeless with support to tackle the cause of their homelessness."

"This strategy will rely on stakeholders and the communities in Wiltshire and we would like people to let us know their views so we can all make a positive impact on preventing homelessness into the future."

The consultation will seek views on five priorities:

- Reducing rough sleeping
- Identifying and preventing homelessness at the earliest possible stage
- Ensuring services are designed to prevent homelessness and support those who are homeless.
- Ensuring those who are threatened with homelessness or who are homeless can secure and keep a suitable home.
- Maintaining effective strategic direction and partnership working

Each priority has a number of actions. These include increasing street outreach, developing a resettlement support service, and ensuring there is more housing available to help the homeless.

The strategy has been informed by Wiltshire Council's Homelessness Review 2018 and Homeless Health Needs Assessment. It also follows the national Homelessness Reduction Act 2017, which introduced a new legal duty on specified public services to refer customers who may be homeless or threatened with homelessness to a local housing authority.

You can access the consultation at

<https://surveys.wiltshire.gov.uk/snapwebhost/s.asp?k=155240979642>

This page is intentionally left blank

Chairman's Announcements

Subject:	The Maltings and Central Car Park Masterplan Consultation
Web contact:	http://consult.wiltshire.gov.uk/portal

Wiltshire Council is consulting on a draft masterplan for the redevelopment of The Maltings and Central Car Park, Salisbury. Once the masterplan has been endorsed by Wiltshire Council it will provide a clear approach for how the site is to be redeveloped over the coming years.

Availability of documents

The draft masterplan for The Maltings and Central Car Park and information on how to make comments will be published on **Monday 15th April 2019**. The documents will be available on the Wiltshire Council website at: www.wiltshire.gov.uk/planning-policy

Paper copies will also be made available to view during normal opening hours at:

- Salisbury Library
- Wilton Library
- Downton Library
- Amesbury Library
- Durrington Library
- Five Rivers Health and Wellbeing Centre, Salisbury
- Wiltshire Council offices in Salisbury (Bourne Hill)
- Wiltshire Council offices in Trowbridge (County Hall)

How to comment

Comments from the public are invited on the draft masterplan from **9:00am Monday 15th April** until **5:00pm Friday 24th May 2019**. Comments can be made:

- Online via the council's consultation portal: <http://consult.wiltshire.gov.uk/portal>
- By email to majorprojects@wiltshire.gov.uk
- By post to: Major Projects, Wiltshire Council, The Council House, Bourne Hill, Salisbury, Wiltshire, SP1 3UZ

Public exhibition

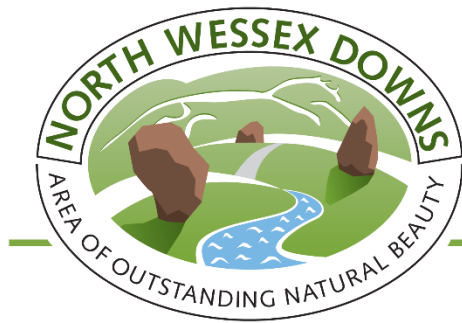
A public exhibition will be held on **Tuesday 23rd April** from **9:30am - 6:45pm** at Salisbury Guildhall. Wiltshire Council officers will be available during this time to answer questions about the draft masterplan.

Next steps

All comments received during the consultation period will be taken into consideration. A final version of the masterplan for The Maltings and Central Car Park will be prepared taking into account the comments that are received during the consultation, before being presented to Wiltshire Council's Strategic Planning Committee for endorsement.

Any queries should be made to Major Projects on 01722 434354 or by email to majorprojects@wiltshire.gov.uk

This page is intentionally left blank



NORTH WESSEX DOWNS WALKING FESTIVAL 8-23 JUNE 2019



Announcing the First North Wessex Downs Walking Festival

8th – 23rd June 2019

Get outdoors during the very first North Wessex Downs Walking Festival this June. With over a dozen walks across the region - from Avebury to Marlborough as well as further afield to Goring, Wantage and Facombe, the walking festival presents the perfect opportunity to breathe deeply, stretch your legs and take in the views of the gorgeous countryside on our doorstep.

Running from 8th to 23rd June, many of the walks are free of charge and range from a pushchair-friendly stroll around the lovely lanes of Huish in the Pewsey Vale to a navigation skills workshop starting from Avebury. There are fascinating wildlife walks on offer at Stonebridge Wild River Reserve with ARK at Marlborough as well as Letcombe Brook in Wantage and Freemans Marsh in Hungerford. Or simply let your walk leader tell you about the history and landscape as you pass through some of the lesser-known areas of the AONB.

Go to the North Wessex Downs website for detailed information about all the walks and to book.

www.northwessexdowns.org.uk/walkingfestival

Calendar of Events

Saturday, 8th June 2019 9.30am	A 'Venerable' Nordic Walk from Blewbury – exploring the historic villages & landscape of the Downs. 11 miles (6 hours). Strenuous. Pay on day - £8
Sunday, 9th June 2019 10.30am	Facca's Valley: The woods, hills & valleys of the Facombe Estate – a peaceful walk with plenty of wildlife, wildflowers and views. 3 miles (2 hours). Moderate. Free
Monday, 10th June 2019 10am	Navigation Skills Workshop from Avebury – improve your skills and techniques to increase personal confidence. 10 miles (5.5 hours). Moderate. £8.50
Tuesday, 11th June 2019 10am	A Guided Walk from Goring: Poets & Giants – discover giants and walk in the ancient footsteps of wayfarers and poets. 12 miles (7 hours). Strenuous. £5.50

Wednesday, 12th June 2019 10am	The Setting of Ashdown House – take in the magnificent setting of the house in a little valley just north of Lambourn. 4 miles (2 hours). Moderate. Free
Wednesday, 12th June 2019 5pm	An Early Evening Stroll from Huish – a family friendly wander through lovely lanes with various start points. Up to 3 miles (1 hour). Easy. Free
Thursday, 13th June 2019 2pm	Discovering Aston Tirrold's History & Wildlife – landscape, wildlife and history. 3 miles (2 hours). Easy. Free
Friday, 14th June 2019 10.30am	Bedwyn Brail, Wilton & Crofton: A rail-friendly walk – a tranquil walk through Bedwyn's local history 5 miles (2 & ³ / ₄ hours). Easy. £2.00
Saturday, 15 th June 2019 2pm	Saturday Afternoon Hike at Alton Barnes White Horse – a sociable and fun walk. 6 miles (2 hours). Moderate. £9.00
Sunday, 16th June 2019 10am	Letcombe Brook Wildlife Walk – a family friendly wildlife walk along the route of the brook 4.5 miles (up to 3 hours). Easy. Free
Wednesday, 19th June 2019 7pm	Exploring Freeman's Marsh in Hungerford – visit and investigate the plants and creatures of this beautiful green space ½ mile (up to 2 hours). Easy. Free
Thursday, 20th June 2019 10.30am	Big Skies & Hidden Valleys: The Manors of Vernham Dean – walk up onto the roof of this hidden corner of the landscape. 4 ½ miles (up to 2 ½ hours). Moderate. Free
Friday, 21st June 2019 10am	A Wildlife Walk Around Stonebridge Wild River Reserve with ARK – with Action for River Kennet's project officer, Anna Forbes. 1 mile (2 hours). Easy. £5.00
Sunday, 23rd June 2019 10am	One Lump or Two: Ladle Hill and Beacon Hill – two walks in one, choose to do one or both of these “aller et retour” routes. 5 miles minimum (2 ¼ hours min). Moderate/Strenuous. Free

For more information either visit the website or email info@northwesexdowns.org.uk



AREA BOARD MEETING: PEWSEY

PEWSEY POLICE OFFICERS:

- Inspector 1068 Chris Martin – Inspector Wiltshire East - 1068@wiltshire.pnn.police.uk
- PS 2334 Pete FOSTER – Deputy Sergeant Wiltshire East - 2334@wiltshire.pnn.police.uk
- PC 2802 Beth BUTWELL - Co-ordinator Wiltshire East - 2802@wiltshire.pnn.police.uk

PEWSEY POLICE COMMUNITY SUPPORT OFFICERS



PCSO 8206 Paul WHITESIDE:

PEWSEY TOWN

8206@wiltshire.pnn.police.uk



PCSO 9454 Emily JOHNSON:

PEWSEY RURAL

9454@wiltshire.pnn.police.uk

NEWLY APPOINTED COMMUNITY CO-ORDINATOR

We are fortunate enough to be able to welcome a new Community Co-ordinator who will be covering the Wiltshire East area. You may have already seen her at community enagements however, for those who haven't PC Beth BUTWELL is looking forward to meeting and getting to know everyone.

Beth served as a Special Constable within Gloucestershire Constabulary for five years before joining Wiltshire Police as a Police Community Support Officer based in Swindon Town Centre. Beth remained as a PCSO for two years and became a Police Officer covering Devizes, Marlborough and Pewsey in 2016.

CURRENT PRIORITIES WITHIN YOUR AREA:

- **Anti-Social Behaviour: PEWSEY Co-op and Leisure Centre**

It is essential that we tackle anti-social behaviour (ASB) within our community.

ASB is defined as, “Acting in a manner that caused or was likely to cause harassment, alarm or distress to one or more persons not of the same household.’

There has been an increase in alleged incidents within the Pewsey area. This include both ASB from vehicles and persons. However, the majority of these have not been formally reported to us via any means. Unfortunately without a formal record of an incident taking place, we are unable to take action.

ADVICE:

Please report any behaviour as defined above to 101 so that we can effectively manage and deal with the perpetrators responsible.

- **Rural Crime – Hare-coursing and Beauty Spot Thefts**

It is imperative that we maintain a high visible presence within our rural county. Wiltshire as a whole is a rural county with numerous beauty spot/sights for tourists and visitors to explore. The isolation of these areas make thefts from cars quite common, especially in the summer months. In PEWSEY and MARLBOROUGH we have experienced an increase in vehicle crime/theft related issues at both our local beauty spots and other rural locations.

ADVICE:

- Before you leave home, think about what you need and leave any unnecessary items of value at home
- Make sure you do not leave documents which have your personal details on in your vehicle.
- Try to park in sign-posted parking areas
- Be cautious about parking your car in isolation. Thieves can be put off when other people are around
- Do not leave anything in your vehicle. A jacket or coat left behind may be of very little value to you, but a thief may think it has been used to hide a laptop or handbag and will break into your vehicle to find out
- Take items with you rather than locking them in the boot, you can't be sure who has seen you
- Do not leave your sat-nav in your vehicle and don't forget to remove the cradle and wipe the sucker marks from your windscreen
- Remember to shut all windows and sunroofs and lock all doors. Activate the alarm and immobiliser
- Make use of any security products you might have such as steering locks
- Whilst enjoying the sights make sure you keep your bag and possessions with you
- Register all your valuables on [the Immobilise website](#)

To report a theft to us call 101 our non-emergency number. If a crime is in progress call 999.

- **Vehicle Crime– Community Speed Watch/Drink Driving**

Keeping our roads safe is extremely important within our area as we have several A Roads that pass through PEWSEY. We receive fortnightly updates from our Community Speed Watch Teams with specific areas to target. It is important that we work with the general public to identify unsafe road users within our county.

ADVICE:

Please report any driving that you consider to be unsafe directly to 101 with the vehicle registration details. We may not be able to prosecute these individuals however, words of advice can certainly be given as a deterrent.

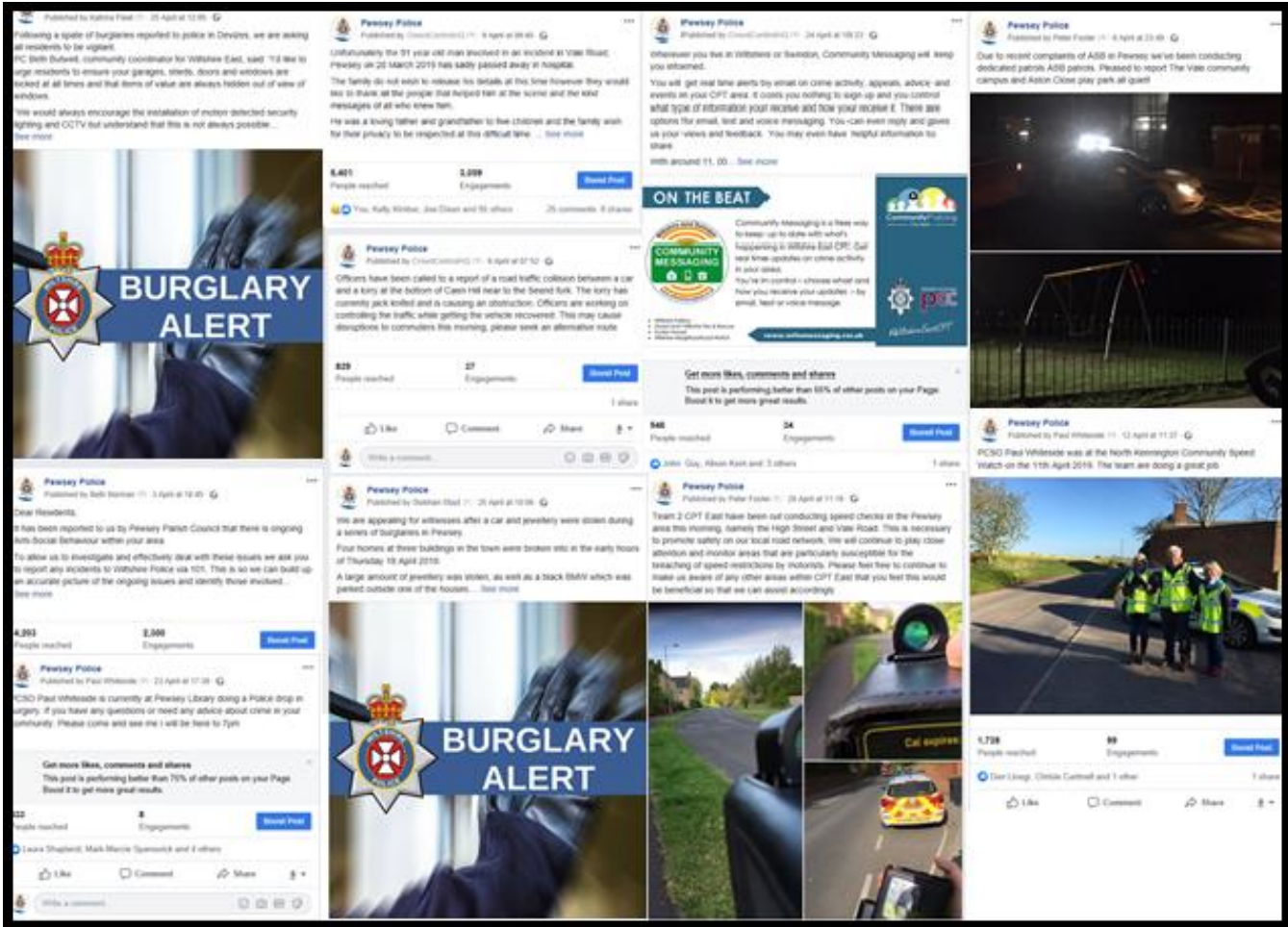
Burglaries:

Although burglaries is not a current priority for your area, we are still receiving reports of burglaries occurring. In some cases the suspects are breaking into the houses in order to steal jewellery, money and vehicle keys. We encourage everyone to be vigilant and report any ongoing suspicious activity to 999. To improve the security in and around your home we are asking residents to remember the following advice:

- Lock your doors and windows every time you leave the house, even if you're in the garden, and make sure you have approved locks or bolts on all doors and windows
- Never leave a spare key in a hiding place like in a plant pot or letterbox - a thief knows all the hiding places
- Keep all keys, purses and wallets out of sight and away from the letterbox
- Consider installing a burglar alarm, and only use a company that is registered or certified with the NSI or the SSIAB
- Do not open the door to anyone you don't know or are not expecting. Always check by using a spy-hole or look through a window
- Make sure that you have up to date contents insurance
- Register all serial numbers from electrical items, tools and garden equipment with Immobilise.com (the free national property register). Mark items without serial numbers with an artificial DNA property marker such as Smartwater or SelectaDNA
- Do not keep large amounts of cash at home - it is much safer in a bank or building society
- Trim back any plants and hedges at the front of your property to no higher than 1 metre to remove hiding places
- Always report any suspicious activity, note any vehicle registrations, descriptions of persons involved and direction of travel
- Use a timer to set lights to mimic your usual activity when you are not at home
- Take photographs of all jewellery including hallmarks and keep them safe. Also consider using an artificial DNA property marker on jewellery or other valuable items
- Make sure any bolts are low enough so they cannot be opened by reaching over the top of the gate.

OUR MEDIA COMMUNICATION WITH YOU:

As you may have seen over the last month both our PC's and PCSO's have been active on all forms of Social Media. Our PC's and PCSO's have been keeping you updated of their patrols and community engagements. PC 2802 Beth BUTWELL has also been updating you on a weekly basis of the ongoing reported crimes occurring with your area.



If you wish to receive the updates please visit Facebook <https://www.facebook.com/wiltshirepolice/>
Or sign up to Community Messaging <https://www.wiltsmessaging.co.uk/>

CRIME STATISTICS WITHIN PEWSEY:

Since April 1st 2019 we have had the following reported to us regarding crime within your area:

- DRUGS

We have had one reported drug related offences within PEWSEY.

- VEHICLE CRIME

We have had twenty one reported vehicle related offences within PEWSEY.

- CRIMINAL DAMAGE:

We have had four reported criminal damage related offences within PEWSEY.

- THEFT/BURGLARIES:

We have had twelve reported theft related offences including burglary within PEWSEY.

- ASB

We have had five reported vehicle related offences within PEWSEY.

PEWSEY AREA BOARD REPORT MAY 20th, 2019

Safe & Well visits

The Fire Service continue to offer Safe & Well visits to residents and if you or someone you know is in need a working smoke alarm to be fitted or needs some fire safety advice in the home or are just worried about what to do in an emergency then you can contact us at; <http://www.dwfire.org.uk/safety/safe-and-well-visits/>

We will arrange for one of our trained advisors or fire crews to pop round and discuss your requirements and needs, give you some top tips for fire safety within the home and if you meet our criteria for free smoke alarm installation we will also do that during the visit.

Pewsey Fire Station have a proactive Facebook account and I would encourage everyone to follow the station by searching for Pewsey Fire Station on Facebook. The page is updated to show incidents the station has attended, training sessions and community events where crews will be attending.

For more information on Thatch fire safety visit:

<http://www.dwfire.org.uk/wp-content/uploads/2018/05/DWFire-Thatched-Living.pdf>

Test your smoke alarm – we are running a #Testit Tuesday campaign to remind people to check their smoke alarms every Tuesday. It takes seconds to push the button and make sure this vital piece of kit is working.

Response

Total Emergency Calls for Pewsey Fire station; 02/03/2019 – 01/05/2019

Category	Callsign	Total Incidents
False Alarm	37P1	8
Fire	37P1	8
Other	37P1	0
Special Service	37P1	5
Water Carrier	37W1	0
Total		21

Availability of On-Call appliance 37P1:

Appliance	Day	Night	Total
37P1	81.55%	99.23%	90.39%

The reduced figures during the day are attributed to possible course attendance as part of a Firefighters requirement to maintain competence, personnel taking annual leave or due to fulltime work commitments where individuals work outside of the town and cannot supply us cover.

On-Call Recruitment

As the Availability table shows, crewing of your appliances falls below our ideal expectations of 100%. We continue to strive and improve on the number of personnel at each station through our recruitment process, so we can increase the number of hours our appliances are available for call outs.

The local appliances are only available to attend calls due to the commitment given by those who live and work within your community.

If you can give some of your time or know someone who may be interested in joining our 'On-call' teams then why not pop into one of the stations on a Monday evening between 7pm and 9pm. Crews are not volunteers but are paid a salary to train and respond to emergency calls. Check out our website: www.dwfire.org.uk for more information or contact us on our recruitment hotline: 01722 691444



RECRUITING NOW!

01722 691444 | dwfire.org.uk

Or pop in on our training evening

PASSIONATE ABOUT
CHANGING & SAVING LIVES

DORSET & WILTSHIRE
FIRE AND RESCUE

Water Safety

NFCC Water safety w/c April 29th.




JUST GOING FOR A RUN

Runners and walkers are the group with the **highest incidence** of accidental drowning in the UK





IF THEY'RE OUT OF REACH THEY'RE NOT IN SAFE HANDS

Supervise children closely and carefully in and around water





**DORSET & WILTSHIRE
FIRE AND RESCUE**

Incidents of note

Multi appliance thatch fire in Milton Road, Pewsey.

Multi appliance thatch fire in The Pitches, Wroughton, Swindon.

Multi appliance thatch fire, Coate, Devizes (below).



Caravan fire involving cylinders at The Woodbridge Inn, North Newton.

RTC, car into house, Collingbourne Kingston (below).



Community Safety Plan

Our Community Safety Plan is our vision until 2022 and can be found on the DWFRS website; <http://www.dwfire.org.uk/community-safety-plan/>

Dave Adamson
Station Manager East Wiltshire (Marlborough, Ramsbury, Pewsey & Ludgershall)
Dorset & Wiltshire Fire and Rescue Service
Five Rivers Health & Wellbeing Centre
Hulse Road, Salisbury, SP1 3NR
Mobile: 07734483892
www.dwfire.org.uk
@DWFRSDaveAdamson

Report to	Pewsey Area Board
Date of Meeting	20/05/2019
Title of Report	Community Area Grant funding

Purpose of the report:

To consider the applications for funding listed below

Provisional Figures	Area Board Grants Budget	H&WB Fund	LYN Fund	CATG
Opening balance 2018/19	£30,993.40	£7,700.00	£13,508.86	
Grant Applications Awarded to date	£500.00	£250.00	£250.00	-
Current Balance	£30,493.40	£7,450.00	£13,258.86	
Balance if all grants are agreed at this meeting	£20,443.88	£7,450.00	£13,258.86	N/A

Applicant	Amount requested
Applicant: Wootton Rivers Village Hall Project Title: Refurbishment of toilet/cloakroom facility at village hall View full application	£2072.12
Applicant: Ham Village Hall Project Title: Ham Village Hall - Doors and Windows View full application	£2000.00
Applicant: Burbage & Easton Royal Cricket Club Project Title: Burbage ER Cricket Club outfield levelling	£5000.00

and re-seed View full application	
Applicant: Upavon Village Hall Project Title: Update and replace Fire Alarms and lighting View full application	£977.40

1. Background

Area Boards have authority to approve Area Grants under powers delegated to them. Under the Scheme of Delegation Area Boards must adhere to the [Area Board Grants Guidance](#)

[The funding criteria and application forms](#) are available on the council's website.

2. Main Considerations

2.1. Councillors will need to be satisfied that funding awarded in the 2019/2020 year is made to projects that can realistically proceed within a year of it being awarded.

2.2. Councillors must ensure that the distribution of funding is in accordance with the Scheme of Delegation to Area Boards.

2.3. Councillors will need to be satisfied that the applications meet the Community Area Board grants criteria.

3. Environmental & Community Implications

Grant Funding will contribute to the continuance and/or improvement of cultural, social and community activity and wellbeing in the community area, the extent of which will be dependent upon the individual project.

4. Financial Implications

Financial provision had been made to cover this expenditure.

5. Legal Implications

There are no specific legal implications related to this report.

6. Human Resources Implications

There are no specific human resources implications related to this report.

7. Equality and Inclusion Implications

Community Area Boards must fully consider the equality impacts of their decisions in order to meet the Council's Public Sector Equality Duty.

Community Area Grants will give local community and voluntary groups, Town and Parish Council's equal opportunity to receive funding towards community based projects and schemes, where they meet the funding criteria.

8. Safeguarding Implications

The Area Board has ensured that the necessary policies and procedures are in place to safeguard children, young people and vulnerable adults.

9. Applications for consideration

Application ID	Applicant	Project Proposal	Requested
3087	Wootton Rivers Village Hall	Refurbishment of toilet/cloakroom facility at village hall	£2072.12
<p>Project Description: Our second toilet/cloakroom is in need of updating. We would like to remove a dividing wall to make the toilet wash basin cubicle into one large room. The plumbing toilet and wash basin also need changing and updating</p> <p>Input from Community Engagement Manager: This application meets the grants criteria</p> <p>Proposal That the Area Board determines the application.</p>			

Application ID	Applicant	Project Proposal	Requested
3282	Ham Village Hall	Ham Village Hall - Doors and Windows	£2000.00
<p>Project Description: The first phase of the refurbishment work at the Village Hall has gone very well. The new plumbing lighting and heating all completed. Lavatories updated guttering repaired and realigned and necessary treatment carried out in the roof. The windows and doors in the Hall are the next part of the project and it is for this work that we are applying for a Grant. The windows need to be upgraded and the 3 exterior doors replaced.</p> <p>Input from Community Engagement Manager: This application meets the grants criteria</p> <p>Proposal That the Area Board determines the application.</p>			

Application ID	Applicant	Project Proposal	Requested
3277	Burbage & Easton Royal Cricket Club	Burbage ER Cricket Club outfield levelling and re-seed	£5000.00
<p>Project Description: The outfield at BERCC has become dangerous due to the un-even surface. The club has 110 juniors and 50 seniors. Last year 3 people got hit in the face due to humps and bumps on the current outfield. The outfield will be levelled and re-</p>			

seeded with sports grass to make it a fantastic and safe facility for the community.

Input from Community Engagement Manager:)

This application meets the grants criteria

Proposal

That the Area Board determines the application.

Application ID	Applicant	Project Proposal	Requested
3200	Upavon Village Hall	Update and replace Fire Alarms and lighting	£977.40

Project Description:

We are carrying out various projects to regenerate our village hall to raise its failing profile. Some jobs have been completed already using our own funds but would now like help with the above as many more jobs are waiting to be carried out.

Input from Community Engagement Manager:

This application meets the grants criteria

Proposal

That the Area Board determines the application.

No unpublished documents have been relied upon in the preparation of this report

Report Author:

Richard Rogers

Community Engagement Manager

07771547522

Richard.rogers@wiltshire.gov.uk

Area Board Update

May 2019

Community Cash Fund winners announced

Five projects that aim to boost the health and wellbeing of people in Wiltshire have been awarded a grant from Healthwatch Wiltshire's Community Cash Fund.

The scheme, which was launched in early March, attracted 41 applications to apply for funds of up to £2,000.

As well as encouraging healthier lifestyles, the five successful projects will also provide a way for Healthwatch Wiltshire to get more feedback on local services from people it might not otherwise hear from.

Manager Stacey Plumb said: "Thank you to everyone who applied to the Community Cash Fund. We were delighted to receive such a high number of applications and it was a really tough job deciding who should receive funding.

"We're really excited to be supporting these incredibly worthwhile projects and are looking forward to following their progress in the months ahead."

And the winners are...

Anybody Can Cook, who want to run healthy eating courses for families on a low income at children's centres in Chippenham and Corsham. Their vision is to promote health equality across communities.

Pound Arts Centre and Rewired Counselling, who are hosting SPARK, a two-day health and wellbeing event in Corsham on 12 and 13 July. The first day is aimed at Year 9 students and focuses on sleep, stress, body, food and confidence, while the second day is open to all and includes a variety of speakers and a marketplace of groups and services.



Community Cash Fund

Rowden Hill Surgery, who are looking to start a choir for patients with respiratory conditions who attend the Rowden, Lodge and Hathaway surgeries in Chippenham. Singing regularly is thought to have a positive effect on the quality of life of someone with a lung condition, and sessions would be open to both patients and their carers.

Wiltshire People 1st, who are launching their Happy Hearts Dance Group for adults with learning disabilities and/or autism. The sessions will promote a healthy lifestyle through conversation, cooking and dance activities.

Wiltshire Wildlife Trust, for their Wellbeing at the Orchard project, which is aimed at people who are experiencing mental health issues. The project, based at Roundway Orchard in Devizes, features eight weeks of outdoor activities including conservation, wild cooking and nature-based craft. Designed to help improve mental wellbeing, the project also provides skills and knowledge on managing an orchard.

Keep up-to-date with the projects at:
www.healthwatchwiltshire.co.uk/community-cash-fund

This page is intentionally left blank

May 2019

The right healthcare, for you, with you, near you

NHS Wiltshire Clinical Commissioning Group (CCG) is responsible for commissioning a broad range of healthcare for the population of Wiltshire. We are led by experienced local GPs drawn from across the county, who provide clear clinical leadership to the big decisions affecting the future of healthcare provision in Wiltshire, carefully tailored to meet the differing needs of people locally.

Our vision is to ensure the provision of a health service which is high quality, effective, clinically-led and local. We are committed to delivering healthcare that meets the needs of Wiltshire people, to consult and engage with our population to enable them to be involved in decisions made about health services and to deliver those services to people in their own homes or as close to home as possible.

News

Primary Care Networks

The Government announced a number of policies and incentives this year to help the health and care system meet increasing demand. General practice is at the core of these new ideas with the establishment of Primary Care Networks.

Each network will serve patient populations of around 30,000-50,000. Organisations within the network area will work closely together to give patients access to a wider range of health and care professionals, as part of community teams. This includes GPs, nurses, physios, therapists, pharmacists and social care providers – each providing care that is proactive, coordinated and accessible. With the focus on patients seeing the right health professional for their needs, GPs should have more time to spend on patients who need them the most.

To support their establishment, a Primary Care Network Development Programme will be centrally funded and locally delivered. By 2023/24, the PCN contract is expected to invest an additional £4.5bn per year, or £1.47 million per typical network covering 50,000 people.

GPs in Wiltshire have decided on 11 Primary Care Networks:

- Sarum West
- Sarum South
- Sarum North
- Devizes
- Trowbridge
- Bradford on Avon and Melksham
- Westbury and Warminster
- Chippenham including Corsham and Box
- Calne
- North Wiltshire Border Locality including Malmesbury, Tolsay, Royal Wootton Bassett, Purton and Cricklade
- East Kennet.

GPs and Practice Managers attended a meeting in mid-March to discuss the establishment of the networks and we will provide more information on the progress of the networks in the months to come.

You can find out more about Primary Care Networks on the [NHS England website](#).

New Chief Executive appointed to lead Avon and Wiltshire Mental Health Partnership NHS Trust

Avon and Wiltshire Mental Health Partnership (AWP) NHS Trust has appointed Dominic Hardisty as its new Chief Executive.

Dominic is currently the Chief Operating Officer and Deputy Chief Executive at Oxford Health NHS Foundation Trust. He will take up his role at AWP in August 2019, replacing Dr Hayley Richards, who announced her plans to retire in January and will be leaving the Trust at the end of May. Simon Truelove will fill the role of Acting Chief Executive until Dominic arrives.

Dominic brings with him 20 years as a leader, with the last 10 in the NHS, where he has worked across acute and community trusts. He has led teams to transform services across acute, community, mental health and children's/young people's pathways, as well as leading on responses to CQC inspections and formation of partnerships across primary, acute, community and social care.



The Chair of AWP, Charlotte Hitchings, said: "I am absolutely delighted to be appointing Dominic.

"He brings a wealth of relevant experience, both in mental health and strategic and operational management. Dominic made a great impression on the more than 50 staff, service users, carers and other stakeholders involved in the assessment and interview process."

Dominic said: "I am thrilled to be appointed Chief Executive of AWP. There are great things going on in the Trust and I look forward to joining and working with staff and stakeholders to ensure we build on current good work and continue to do our very best for service users, their families and carers, as well as for our staff to make AWP outstanding."

Charlotte added: "I am excited about Dominic's aspirations for the Trust and we are all very much looking forward to working with him as we continue on our drive for continuous quality improvement across our services for the benefit of the people we serve.

I'd also like to take this opportunity to thank Hayley Richards once again for her commitment, passion and hard work throughout her long career with the NHS and to wish her well in her retirement."

Dominic holds a degree from Oxford University and an MBA from Harvard Business School and is currently training to be a Health Care Assistant (HCA).

In another new appointment, Consultant Psychiatrist, Dr Sarah Constantine has joined AWP as the new Medical Director, starting in the role on 16 April 2019.

Governing Body meeting

Our next Governing Body meeting is on 28 May 2019 at 10.00am at Southgate House, Pans Lane, Devizes SN10 5EQ. You can read the papers from previous meetings on our website www.wiltshireccg.nhs.uk/governance/governing-body-meetings-in-public

News archive

Read more news from Wiltshire CCG in our [news archive](http://www.wiltshireccg.nhs.uk/news/news-archive) – www.wiltshireccg.nhs.uk/news/news-archive.

Keep up to date with news and information from Wiltshire CCG on social media.



NHS Wiltshire CCG



@NHSWiltshireCCG

This page is intentionally left blank